

# Heritage Survey: Stellenbosch Rural Areas

by Penny Pistorius and Stewart Harris - June 2004

---

**Sub Area Name**

Jonkershoek

**Catalogue Number**

02.19

**Property Name**

Glen Conner, Jonkershoek, Stellenbosch District

**Alternative Names**

Oude Nektar, Neil Ellis Estate, Jonkershoek Cellars

**Farm Number**

345/16

**Linkages**

Old Nectar Historical Property

**Heritage Resource Name**

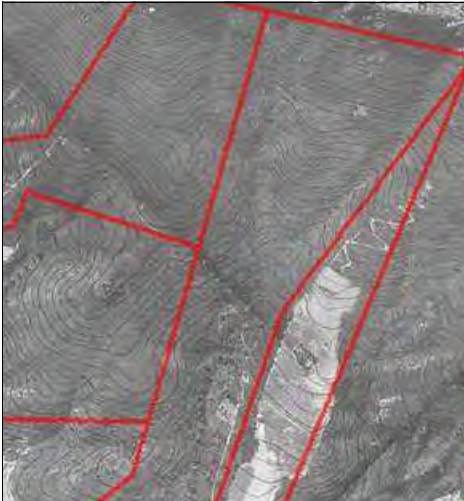
Glen Conner farm

**Type of Resource**

farm

**Composites**

Jan Lui's field



**Photo Date**

1980

**Photographer**

Chief Director: Surveys & Mapping

**Photo Title**

Orthophoto with added cadastrals



**Photo Date**

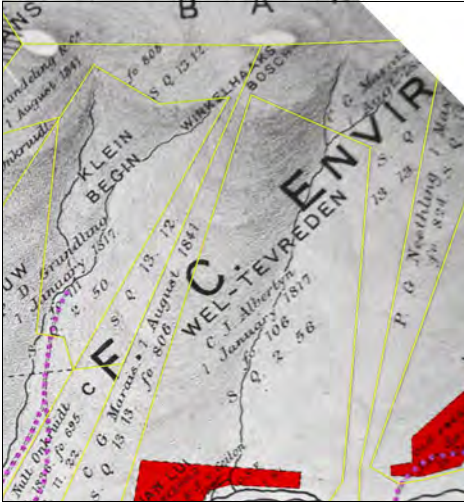
1950s

**Photographer**

Studio Lockley

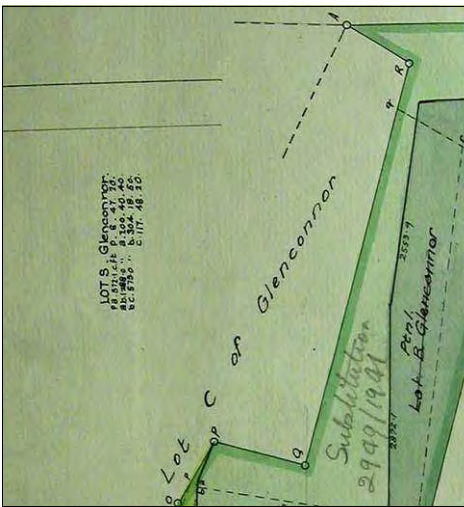
**Photo Title**

Detail of 1950 Lockley photo. Glen Conner is the further of the two valleys running diagonally across centre, the far part of the triangular hilltop fields lower R, the bank below and the field below that (small corner visible, bottom R).



**Photo Date**      **Photographer**  
 CAM2-409

**Photo Title**  
 1902 map: Red blocks 17th century grants, yellow lines early 19th c, pink dots roads. Grey/black rivers.



**Photo Date**      **Photographer**  
 Stewart Harris

**Photo Title**  
 1931 consolidation diagram.



**Photo Date**      **Photographer**  
 1938                      Chief Director: Surveys & Mapping

**Photo Title**  
 1938 aerial with added (current) cadastrals

**Description**

**Visual Description**

Large, irregularly-shaped farm on the slopes of the Jonkershoekberge, bounded west and east by portions of Oude Nektar, and south by Old Nektar and the Jonkershoek road. The northern portion extends to the ridge line and extends east and west behind the two portions of Oude Nektar. The central section

**Notes**

86.6333 ha  
 In 2002 the owner was Jonkerhoek Cellars Pty Ltd. We were informed at the Neil Ellis winery that this farm is called Oude Nektar, along with the neighbouring properties east and west, and has the

is a narrow strip that is mainly the valley of the Old Nectar stream. In the southern half of this strip, the stream runs on the eastern side; the rounded tops of the ridge on the western side are vineyards (See Oude Nektar Hilltop Field 02.16/03), which extend southwards, backing onto the Old Nectar homestead (on adjacent Property 02.20).

same owner (see 02.16 and 02.16a).

In the southern portion of the farm a triangle extends westward along the ridge behind Jan Lui Field, and then southward down the side of the Bult' (see 02.16 Oude Nektar (west)). This part itself has two morphologies. The south eastern part is a triangular field, called by us Jan Lui's field (see Composite1), bounded on the south by Jonkershoek road. North and west, the field is enclosed by the steep banks below the Oude Nektar and Glen Conner Hilltop Fields (See 02.16/03 and the side of the 'Bult' (see 02.16/01).

### **History**

This was part of the core of Old Nectar historical property, including the triangular field granted in 1692 and a large portion of the 1817 extension. For a fuller history of the entire original farm see Old Nectar Historical Property. Original grants in this area were amalgamated and the portions that emerged in the 1930s had new boundaries which were apparently designed to share out the arable land (Photo 5). The Oude Nektar homestead (see 02.22) was subsequently separated from this portion. Its history should be studied further and the above outline confirmed.

### **Historical Notes**

Deeds Office search not attempted.

### **Associated People**

See Old Nectar Historical Property

### **Associated Events**

### **References**

- 1902 Brink Map CA M2-409 shows location of grants
- 1938 aerial photograph.
- 1980 orthophoto
- 2000 aerial photograph.
- 1950 Lockley
- 1986 Sutherland
- Site inspection 05/05
- See also Old Nectar Historical Property

### **Assessment**

#### **Significance Statement**

The upper part of the property, with valley and stream, is part of the natural backdrop of the valley, and the high vineyard is part of the rural landscape, reflecting advances in agricultural technology and economic developments. Jan Lui's Field is part of an original 17th C grant and the core of historical Old Nectar, as well as a significant landmark and point of change on the journey up the valley along the Jonkershoek Road. See also Composite 02.19/01.

#### **Significance Category**

A, E

A = course / pattern of history	F = creative / technical
B = rarity	G = social / cultural / spiritual
C = information potential	H = assoc. NB person / group
D = characteristic of type	I = slavery
E = aesthetic	

#### **Proposed Grading**

3 heritage area (S.31). Composite 1 = 2

#### **Vulnerabilities**

#### **Recommendations**

**NHR Act Status**

**Date of Gazette**

**SAHRA File ref.**

**Official Grading**

## **Maps**

**Number of Ortho Photo**

**GPS X**

**Date of Ortho Photo**

**GPS Y**

**Aerial Photograph Date**

**GPS Model**

**Aerial Photo Number**

**GPS Setting**

## **Composites (groups of clusters of heritage resources: sub-places and areas)**

**Property Name**

Glen Conner, Jonkershoek, Stellenbosch District

**Composite Name**

Glen Conner hilltop fields

**Catalogue Number**

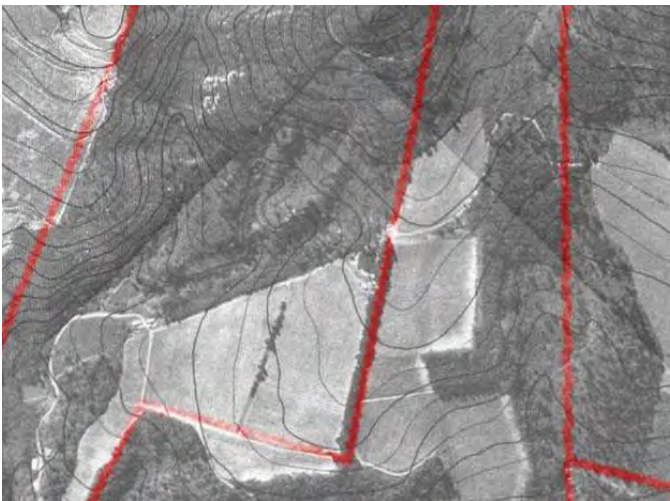
02.19/02

**Type of Resource**

landscape

**Objects**

none



**Photograph Date**

1980

**Photographer**

Chief Director: Surveys & Mapping

**Photo Title**

1980 orthophoto with cadastrals



***Photograph Date***

1938

***Photographer***

Chief Director: Surveys & Mapping

***Photo Title***

1938 aerial photo



***Photograph Date***

04/05

***Photographer***

Penny Pistorius

***Photo Title***

Oude Nektar and Glen Conner hilltop fields from the south bank. They continue from the top of the ridge , L, down the east side behind Old Nektar, and are connected to the Oude Nektar (east) fields, R, in front of the Jonkershoek forest.



***Photograph Date***

2000

***Photographer***

Chief Director: Surveys & Mapping

***Photo Title***

2000 colour aerial

***Composite - Description***

***Visual Description***

The rounded top of the hill behind Jan Lui's field is a large vineyard, which is partly on Oude Nektar (west) (02.16/03) and partly on Glen Conner, and which is connected by a road to the high vineyard on Oude Nektar east (02.16a) (Photo 4). They are apparently all farmed together as part of Oude Nektar by Jonkershoek Cellars.

The vineyards on Glen Conner extend down and upwards on the east side of the hill, forming the backdrop to Old Nectar (02.20).

**Condition**

**Composite - History**

**History**

See Old Nectar Historical Property. There were probably fields on top of the hill from an early date; certainly they were in place by 1938, a little smaller than at present and apparently planted with grain. There were then windbreaks of trees or bush along the boundary with Oude Nektar (west), and subdividing the fields into an uneven checkerboard. It is not possible to make out what the crops were at that time.

**Associated People**

See Old Nectar Historical Property

**Associated Events**

**References**

See Property

**Composite - Assessment**

**Significance Statement**

The vineyards on top of the rounded hill behind Jan Lui's field and extending down the side of the hill behind Old Nectar are a significant part of the backdrop to the valley; they demonstrate the ongoing development of agricultural practice and economy.

**Significance Category**

A, E

**Proposed Grading**

3

A = course / pattern of history	F = creative / technical
B = rarity	G = social / cultural / spiritual
C = information potential	H = assoc. NB person / group
D = characteristic of type	I = slavery
E = aesthetic	

**Vulnerabilities**

**Recommendations**

**Official Grading**

**NHR Act Status**

**Date of Gazette**

**Composite - Objects**

**Property Name**

**Composite Name**

**Heritage Resource Name**

**Catalogue Number**

**Type of Resource**

***Composites (groups of clusters of heritage resources: sub-places and areas)***

***Property Name***

Glen Conner, Jonkershoek, Stellenbosch District

***Composite Name***

Jan Lui's field

***Catalogue Number***

02.19/01

***Type of Resource***

Landscape feature - water meadow

***Objects***

none



***Photograph Date***

2000

***Photographer***

Chief Director: Surveys & Mapping

***Photo Title***

2000 colour aerial photo.



***Photograph Date***

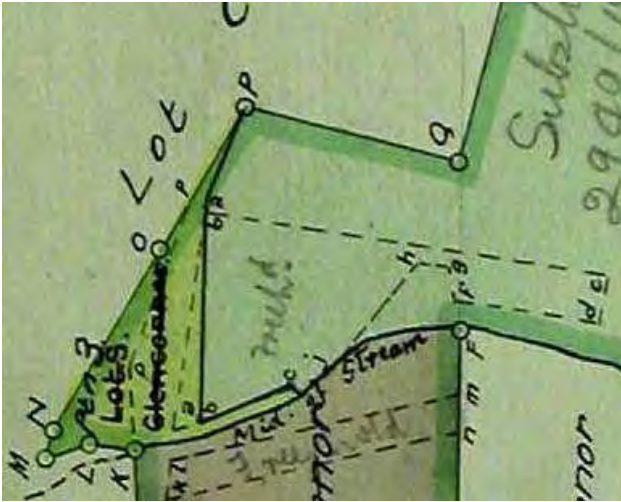
1980

***Photographer***

Chief Director: Surveys & Mapping

***Photo Title***

Orthophoto with cadastrals.



**Photograph Date**

**Photographer**

Stewart Harris

**Photo Title**

Detail of 1931 Consolidation diagram, also showing 17th C grant (a-b-c-etc)



**Photograph Date**

1938

**Photographer**

Chief Director: Surveys & Mapping

**Photo Title**

1938 aerial photo.



**Photograph Date**

05/05

**Photographer**

Penny Pistorius

**Photo Title**

The vineyards field from the north, looking eastward





***Photograph Date***

05/05

***Photographer***

Penny Pistorius

***Photo Title***

The vineyards from the centre, looking north at the building in the north west corner (L) and enclosing ridge.



***Photograph Date***

05/05

***Photographer***

Penny Pistorius

***Photo Title***

Neil Ellis winery, with house on Oude Nektar Bult above.



***Photograph Date***

05/05

***Photographer***

Penny Pistorius

***Photo Title***

Shed, north west corner.



### *Photograph Date*

05/05

### *Photographer*

Penny Pistorius

### *Photo Title*

Stark Conde building, north west corner

## *Composite - Description*

### *Visual Description*

A typical flat, triangular Jonkershoek Valley water meadow, powerfully enclosed by the steep slopes of a ridge to the north and 'the Bult' to the west, which have Oude Nektar (west) on top of them (see 02.16). A stream (Jan Lui stream) runs in a deep kloof between these ridges (see 02.16/02), entering the field in the north west corner and running down the west side of the field to a large dam in the south west corner. There is another minor stream running down the north ridge, which is covered with thick bush -- this stream is collected and distributed underground. The Jonkershoek road, lined with oak trees, and the Eerste River beyond it form the south eastern edge of the triangle. The field is experienced as a sudden 'opening up' of space along the road, from both directions. The Old Nektar homestead with which the field is historically associated is on the adjacent property to the east (02.20).

Apart from the large dam, which is landscaped with lawns, reeds and shrubs, the floor of the field is predominantly a well-maintained vineyard (photos 5, 6), with the Neil Ellis winery complex at the foot of the Bult on the west side (photos 7, 8). There is a late 20th C boundary wall and entrance gate below the dam. In the north west corner are a further two buildings, both contemporary (photo 9, 10). A road leads past them into the Oude Nektar Kloof (02.16/02) and connects to the hilltop vineyards (02.16/03) and Oude Nektar homestead on the Bult (02.16/01).

### *Condition*

## *Composite - History*

### *History*

When Jan and Marquard of Ceylon settled in the Jonkershoek Valley in the mid 1680s, this was one of the first fields they brought into agricultural production. Though their 1692 grant does not exactly match the edges of the field, it clearly was intended to (see Historical Notes). The field has been in continuous use for more than 320 years. This land and the watermeadows across the river were the chief areas farmed by Jan of Ceylon (though he also used any available arable areas beyond the official boundaries.) No data has been found that shows what Jan Lui's field was used for (1688 and 1692 Census data for this farm probably exist: search not attempted). Typically, though, he would have had vines and was obliged to have a percentage of his land under grain (wheat and rye). He almost certainly had cattle and sheep. Old photographs of nearby farms show similar flat lands under vines. Wheat may have been grown on the flat hilltops further north where the cattle and sheep also ranged. For a fuller history of the entire original farm see Old Nektar Historical Property which also includes sketches of Jan and Marquard of Ceylon. The field is irrigable from the Oude Nektar Kloof stream which enters at the northwest corner. In the 20th century its waters were captured for a dam in the southwest corner. After 1980 the previously itinerant winemaker Neil Ellis established his winery here, entering into partnership with the owner of Oude Nektar for the supply of grapes. The dam was enlarged, the winery constructed and vineyards improved and expanded.

Its history should be studied further and the above outline confirmed.

NOTE: Interpretation and accuracy of 17th century grant diagrams:

An accurate 1931 survey locates the position of the 1692 grant (this is unusually accurate data: we normally depend on Brink's 1902 map but this is very unreliable as can be seen in his plotting of the course of tributaries, etc.) Clearly, Jan of Ceylon wanted the field, which has very distinct edges. The shape of the 1692 grant does not exactly match these edges. We presume that it was intended to. We conclude that the 1692 (and 1683) grant diagrams were inaccurately surveyed by modern cadastral standards.

The location of the grant relative to modern boundaries is another matter. The diagrams on the grants do not provide good locational data, such as notable corner markers. It is, frankly, impossible for any surveyor to exactly locate it.

It is possible that there were originally cairns marking the corners which have disappeared over time (Thibault's 1812/13 survey of the right side of the road to Wynberg sometimes shows these but they are seldom if ever

mentioned on 17th and 18th century surveyors' diagrams).  
The authors welcome discussion on these issues: see our email addresses.

***Associated People***

See Old Nectar Historical Property

***Associated Events***

***References***

See Property and Old Nectar Historical Property  
John Platter South African Wine Guide 2004

***Composite - Assessment***

***Significance Statement***

This triangular field, with steep banks enclosing it on the north and west, a stream entering at the north west corner and the Eerste River running along the south-east side, is one of the most distinctive and powerfully experienced of the water meadows that are typical of the Jonkershoek valley; it is a notable Place in the natural and cultural landscape. Its distinction is reflected in its very long history: farmed continuously from the 1680s when it was granted to Free Blacks Jan and Marquard of Ceylon (slavery association), it was part of the primary landholding of Old Nectar and it and the homestead were closely associated and mutually dependent until the subdivisions of the 20th C. Late 20th C developments associated with the wine industry have impacted on its character, but demonstrate ongoing agricultural and economic development in the Valley as a whole and may be regarded as an enrichment rather than an intrusion.

***Significance Category***

A, C, D, E, G, H, I

A = course / pattern of history	F = creative / technical
B = rarity	G = social / cultural / spiritual
C = information potential	H = assoc. NB person / group
D = characteristic of type	I = slavery
E = aesthetic	

***Proposed Grading***

2

***Vulnerabilities***

***Recommendations***

The place merits further study and archaeological investigation to establish whether historical remnants such as water channels may exist.

***Official Grading***

***NHR Act Status***

***Date of Gazette***

No buildings older than 60 years (S. 34)

***Composite - Objects***

***Property Name***

***Composite Name***

***Heritage Resource Name***

***Catalogue Number***

***Type of Resource***