

# Heritage Survey: Stellenbosch Rural Areas

by Penny Pistorius and Stewart Harris - June 2004

---

## **Sub Area Name**

Jonkershoek

## **Catalogue Number**

02.15c

## **Property Name**

Swartbrug Filtration System, Jonkershoek, Stellenbosch District

## **Alternative Names**

Intake House, In Take House

## **Farm Number**

352/3

## **Linkages**

Jonkershoek historical property; 02.15d Intake House

## **Heritage Resource Name**

Swartbrug Filtration System

## **Type of Resource**

waterworks

## **Composites**

none listed



## **Photo Date**

1980

## **Photographer**

Chief Director: Surveys & Mapping

## **Photo Title**

1980 orthophoto with added (approximate, current) cadastrals. The property has a long panhandle from the east corner to Intake House, presumably a pipeline.



## **Photo Date**

2000

## **Photographer**

Chief Director: Surveys & Mapping

## **Photo Title**

2000 aerial photo, Swartbrug



*Photo Date*    *Photographer*

***Photo Title***

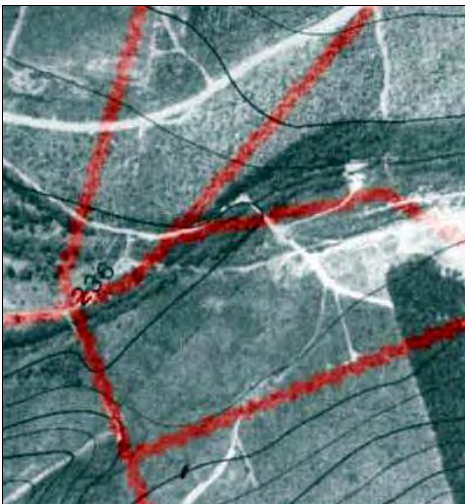
1902 map: Red blocks 17th century grants, yellow lines early 19th c, pink dots roads, black rivers. Approximate current cadastrals red lines.



*Photo Date*    *Photographer*

***Photo Title***

Detail of 1933 map CAM3-2834



*Photo Date*    *Photographer*

1980                      Chief Director: Surveys & Mapping

***Photo Title***

1980 orthophoto with added cadastrals.



**Photo Date** 1938  
**Photographer** Chief Director: Surveys & Mapping

**Photo Title**  
1938 aerial photo



**Photo Date** 08/04  
**Photographer** Penny Pistorius

**Photo Title**  
Swartbrug from Baviaanskloof. The toe of the hill on Assegaibosch is lower left corner, with the road to Swartbrug bridge just above it and the water meadow of the Filtration Plant to the right. Kleinplaas Dam wall extreme R.

## Description

### Visual Description

This is a typical Jonkershoek water meadow on the south bank of the Eerste River, with Baviaanskloof stream on its west boundary and Verlorekloof stream on its eastern edge. The Circular Drive from Swartbrug bridge runs across it, as do other forestry roads. There is a post-1980 building west of the road, presumably associated with the filtration system (not inspected).

### Notes

8 ha  
Owner Stellenbosch Municipality

### History

Today part of the Municipality's Swartbrug Filtration System (related to the Intake House). The fertile, easily irrigated water meadow was part of the 1683 grant -- the highest in the valley and some way from other Jonkershoek patches. In 1902 the old road ran more or less where the present road runs and probably crossed the river at the same point (Swartbrug) although the present bridge is modern. See Intake House 02.15d for more of the history of water supply to Stellenbosch town.

### Historical Notes

Deeds Office search not attempted.

### Associated People

See Jonkershoek Historical Property

### Associated Events

## References

1902 Brink Map CA M2-409 shows location of grants  
1932 map CA M3 2834  
1938 aerial photograph.  
1980 orthophoto  
2000 aerial photograph.

## Assessment

### Significance Statement

A typical Jonkershoek water meadow, the highest in the valley to be part of the original 17th C grants, it has been farmed from the earliest period. The old road to the upper valley crosses it. Associated with the 20th C history of provision of water to Stellenbosch town.

### Significance Category

A, B, C, D, E, F, G

A = course / pattern of history	F = creative / technical
B = rarity	G = social / cultural / spiritual
C = information potential	H = assoc. NB person / group
D = characteristic of type	I = slavery
E = aesthetic	

### Proposed Grading

3 heritage area (s. 31)

### Vulnerabilities

### Recommendations

Further research re water supply history.

<i>NHR Act Status</i>	<i>Date of Gazette</i>	<i>SAHRA File ref.</i>	<i>Official Grading</i>
National monument	1994-04-05		

## Maps

<i>Number of Ortho Photo</i>	<i>GPS X</i>
<i>Date of Ortho Photo</i>	<i>GPS Y</i>
<i>Aerial Photograph Date</i>	<i>GPS Model</i>
<i>Aerial Photo Number</i>	<i>GPS Setting</i>

## Composites (groups of clusters of heritage resources: sub-places and areas)

<i>Property Name</i>	<i>Composite Name</i>
<i>Catalogue Number</i>	<i>Type of Resource</i>

### Objects

