

Heritage Survey: Stellenbosch Rural Areas

by Penny Pistorius and Stewart Harris - June 2004

Sub Area Name

Jonkershoek

Catalogue Number

02.03

Property Name

Mount Happy, Jonkershoek, Stellenbosch District

Alternative Names

Bengale

Farm Number

1440, 1441, 1308/4 (337, 339, 362, 363, 364, 1308)

Linkages

Klein Gustrouw, Lanzerac

Heritage Resource Name

Mount Happy farm

Type of Resource

farm

Composites

1. Werf
2. Approach
3. Water meadows
4. Mountain slopes
5. Worker's village



Photo Date **Photographer**

Photo Title

1902 map: red blocks 17th century grants, yellow lines early 19th c, pink dots roads. Grey/black rivers.

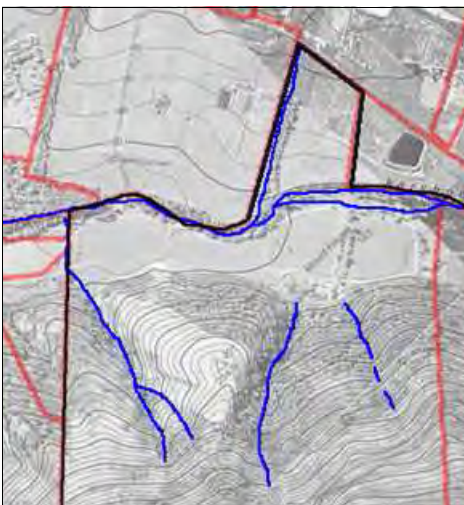


Photo Date **Photographer**

1980 Chief Director: Surveys & Mapping

Photo Title

Mount Happy, orthophoto with approx. cadastrals and rivers added.



Photo Date **Photographer**

1938

Chief Director: Surveys & Mapping

Photo Title

Mount Happy, 1938 aerial photo with approx. cadastrals added.

Description

Visual Description

A property on the north-facing slopes of the Stellenboschberg, bounded by the Eerste River in the north, the south bank smallholdings Fynbos and Waaiwinde in the east, Vergenoegd in the west, and the Hottentots Holland Nature Reserve in the south. It consists of 3 land parcels (see photo 1). Erf 1440, the westernmost of the 3 portions, has a section on the north bank of the river between Chase Farm and River House, and there is also a small section of erf 1441 across the river. Like the other south bank farms, alongside the river it has a fairly narrow strip of water meadows, behind which the ridges of the Stellenboschberg foothills rise steeply. The highest point of the farm is a rocky outcrop at 579m. The mid-slopes are covered with pine trees, while the upper slopes are natural bush. Several streams cross the property and are channelled across the water meadows. The entrance to the property from Jonkershoek Road is on the north portion of erf 1440 and crosses the river over a bridge (see Composite 2). A dirt road runs south of the river to the east gates of Mount Happy (no longer used as an entrance).

Notes

The SDF lists the farm numbers as 337, 339, 362, 363, 364, 1308, 1308/1, /2, /3, /4. The farm numbers outside brackets in the Farm Number field are from the Stellenbosch Municipality erf map. The present owners are Mr and Mrs Frikkie Nel. During 2005 (?) the owners of Mount Happy bought River House, Catalogue no 02.31.

History

There were several Free Black farmers who were granted the watermeadows on the south bank of the Eerste Rivier in the 1680s, Louis of Bengal and Anthony and Manual of Angola. From 1696 their grants were farmed along with Lanzerac. Its werf is nearby so there was no need for building development on the south bank, but there may be then, or early in the 19th century, have been important irrigation developments. The South Bank waterleiding (see \$) is still visible higher up the valley, and these lands may have irrigated in a similar way. An old track can still be discerned along the interface of slope and meadow and we establish elsewhere that the old road and the waterleiding were closely aligned. Not studied further. (See Lanzerac and Klein Gustrouw Historical Properties for a fuller history of this period.)

In 1817 Izaak de Milander, a relation of the family dynasty which owned Lanzerac, was regranted the Free Blacks' land on the south bank and also other flat land higher up the gentle slope (probably already being used 'as of right') roughly as far as the steep bank where we believe the old road may have run. De Milander's grant was on land that had not been independently farmed for 120 years and it seems likely that there was a major building episode soon after 1817. See Werf Composite.

The Georgian features of the homestead date from c1830 according to Fransen and Cook (but in this area may be later). Mount Happy had been acquired by PC van Bloemestein and in 1837 he was granted further land around it: useless mountainside (a grand gesture of land acquisition) and also the land on the banks of the Eerste Rivier (which had been reserved by the Government till then). It was called Weltevreden at this time. The origin of the name Mount Happy has not been established.

Original grants in this area were amalgamated and when the 10 portions of Mount Happy re-emerged in the 20th century their boundaries bore little resemblance to the original cadastrals. Detailed studies of the ensuing chain of owners have not been attempted but in the late 20th century it was acquired by MH Dalling. He closed the approach road along the south bank and purchased additional land across the Eerste where he made a new access point, lining it up so it crossed the river on the axis of the old avenue.

Historical Notes

Land ownership between 1696 and 1790 is as Lanzerac.

Deeds Office search not attempted. It will produce a rich harvest of people who may influence the social heritage values of the place and link them to building episodes and the sweep of history. It will also produce land surveys showing boundaries and possibly buildings and landscape features, and suggest areas with archaeological potential.

Associated People

* Anthony of Angola
see Klein Gustrouw and Lanzerac

* Manuel of Angola
see Klein Gustrouw and Lanzerac

* Izaak Johannes de Milander or Milander

Granted Mount Happy in 1817 consisting of considerable land on the south bank incorporating part of the Angola grant (1902 map). Izaak Johannes de Milander, born 1780, married Barbara Christina Briers on 9.7.1780, five children 1801-1813. His mother was Anna Geertryda Albertyn, the second of three wives of Hermanus Johannes de Milander of Amsterdam (De Villiers and Pama 1981:577-8) who is uncertainly identified in the genealogies to be b1c1, the sister of CJ Albertyn (De Villiers and Pama 1981:7-8) who owned the Angola farm from 1790 to c1808.

* PC van Blommestein

He owned the property at about the time the house was Georgianised and was granted great amounts of mountainside behind in 1837. These grand gestures may give some clues his personality and taste. Grant was called Weltevreden (1902 map). Not in De Villiers and Pama.

Associated Events

References

1902 Brink Map CA M2-409 shows location of grants

1938 aerial photograph.

1980s orthophoto

2000 aerial photograph.

Smuts ed 1979

Fransen and Cook 1980:155.

See also sources specified under 'People'

Field trips, June 2004

Assessment

Significance Statement

The farm has a long history since the initial 1680s grants of the water meadows to "Free Blacks". It has the typical cross-section of Jonkershoek Valley farms, with flat water meadows next to the river, backed by steep slopes crossed by streams. An important part of the cultural landscape, it is sensitively located near the mouth of the valley and highly visible.

Significance Category

A, C, D, E

A = course / pattern of history	F = creative / technical
B = rarity	G = social / cultural / spiritual
C = information potential	H = assoc. NB person / group
D = characteristic of type	I = slavery
E = aesthetic	

Proposed Grading

3 heritage area (s. 31)

Vulnerabilities

Recommendations

There may be traces of the south bank water furrow and old road across the eastern watermeadows; if so, they are older than 60 years (S.34) and archaeological (S. 36). See Catalogue nos 02.00/02 and /03.

NHR Act Status

Date of Gazette

SAHRA File ref.

Official Grading

Maps

Number of Ortho Photo

GPS X

Date of Ortho Photo

GPS Y

Aerial Photograph Date

GPS Model

Aerial Photo Number

GPS Setting

Composites (groups of clusters of heritage resources: sub-places and areas)

Property Name

Mount Happy, Jonkershoek, Stellenbosch District

Composite Name

South bank workers' housing

Catalogue Number

02.03/05

Type of Resource

Dwellings

Objects

1. □ Ruined cottage



Photograph Date

06/04

Photographer

Penny Pistorius

Photo Title

Cottages from the field. The ruin is under the large gum tree, R.



Photograph Date

1980

Photographer

Chief Director: Surveys & Mapping

Photo Title

Othophoto



Photograph Date

06/04

Photographer

Penny Pistorius

Photo Title

View of the cottage cluster from Topaz on the opposite slopes.



Photograph Date

06/04

Photographer

Penny Pistorius

Photo Title

Typical modern cottage.



Photograph Date

1938

Photographer

Chief Director: Surveys & Mapping

Photo Title

1938 aerial photo shows two, possibly three, cottages

Composite - Description

Visual Description

East of the werf is a cluster of workers' housing on the lower slopes, watered by a stream. Most of the houses are apparently modern (not inspected in detail), but there is one old, roofless, ruined cottage near the edge of the field (See Objects). There is another cluster of workers' housing north of the river -- see Composite 02.03/03, Object 3.

Condition

Composite - History

History

There were two or three houses here by 1938, of which only one apparently still exists as a ruin (see Objects).

Associated People

See Property history.

Associated Events

References

See Property history.

Composite - Assessment

Significance Statement

The cluster of workers' housing is in a typical location for a dwelling site, on the slope near a stream and just above the fields. It is part of the cultural landscape and may have social significance. It is visible from the slopes opposite.

Significance Category

A, C, D

Proposed Grading

3

A = course / pattern of history	F = creative / technical
B = rarity	G = social / cultural / spiritual
C = information potential	H = assoc. NB person / group
D = characteristic of type	I = slavery
E = aesthetic	

Vulnerabilities

Recommendations

The village, including associated vegetation, paths, etc. should not be removed or fundamentally changed without further research into the history of the dwelling site. See also Objects.

Official Grading

NHR Act Status

Date of Gazette

Composite - Objects

Property Name

Mount Happy, Jonkershoek, Stellenbosch District

Composite Name

South bank workers' housing

Heritage Resource Name

Ruined Cottage

Catalogue Number

02.03/05.01

Type of Resource

Dwelling/ruin



Photograph Date

06/04

Photographer

Penny Pistorius

PhotoTitle

Ruined cottage, Mount Happy

Objects - Description

Visual Description

The ruin of a small two-roomed cottage built with stone foundation and unfired mud brick walls with mud mortar, and a later wall at one end. It had a parapet and flat corrugated iron roof on poplar beams. This may have been a later modification as the parapet wall is built of fired bricks, as is one end wall. There is no surviving joinery.

Condition (short)

Ruin

Architectural Style

Vernacular

Objects - History

History

The cottage may be older than 60 years; it is difficult to make out on the 1938 aerial photo.

Construction Date

Associated People

Associated Events

References

Objects - Assessment

Significance Statement

The ruin has some interest in terms of building materials and construction methods. It may have social significance to workers.

Significance Category

A, C

Proposed Grading

3

A = course / pattern of history	F = creative / technical
B = rarity	G = social / cultural / spiritual
C = information potential	H = assoc. NB person / group
D = characteristic of type	I = slavery
E = aesthetic	

Vulnerabilities

Natural decay.

NHR Act Status

May be older than 60 years (S.34)

Date of Gazette

Official Grading

Recommendations

Should be allowed to continue to decay naturally.

Composites (groups of clusters of heritage resources: sub-places and areas)

Property Name

Mount Happy, Jonkershoek, Stellenbosch District

Composite Name

Mount Happy Mountain slopes

Catalogue Number

02.03/04

Type of Resource

Landscape composite

Objects

1. High Field
2. Earthworks



Photograph Date

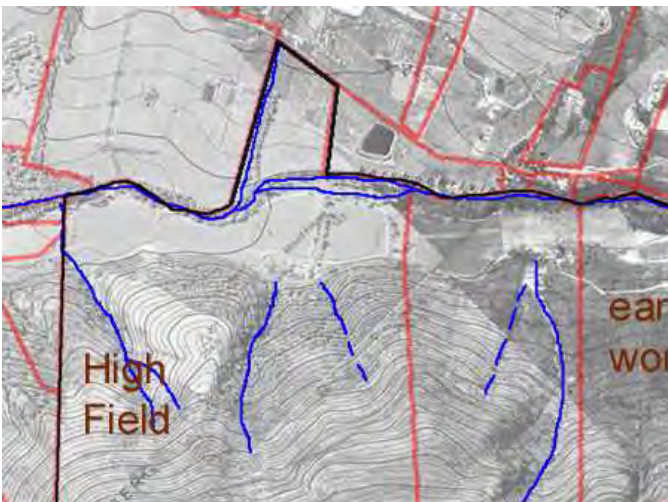
06/04

Photographer

Penny Pistorius

Photo Title

View of Mount Happy from Konstanz.



Photograph Date

1980

Photographer

Chief Director: Surveys & Mapping, Penny Pistori

Photo Title

Othophoto with cadastrals and watercourses

Composite - Description

Visual Description

South of the water meadows the Stellenboschberg rises fairly abruptly, particularly in the west; the eastern slopes are gentler. Apart from the High Field (see Object 02.03/04.01), the slopes are not farmed. There are stands of exotic trees on the lower slopes behind the homestead and around the workers' housing cluster (see 02.03/05), giving way to natural vegetation. A stream runs west of the High Field, two streams water the werf, another two join near the worker's housing and there is one near the east boundary (see also Object 02.03/04.02, earthworks).

Condition

Composite - History

History

See Property history.

Associated People

See Property history.

Associated Events

References

See Property history.

Composite - Assessment

Significance Statement

The slopes of Stellenboschberg are part of the frame of the Jonkershoek Valley and the cultural landscape. They are highly visible from many viewpoints and therefore visually sensitive.

Significance Category

A, D, E

Proposed Grading

3

A = course / pattern of history	F = creative / technical
B = rarity	G = social / cultural / spiritual
C = information potential	H = assoc. NB person / group
D = characteristic of type	I = slavery
E = aesthetic	

Vulnerabilities

Recommendations

Official Grading

NHR Act Status

Date of Gazette

Composite - Objects

Property Name

Mount Happy, Jonkershoek, Stellenbosch District

Composite Name

Mount Happy Mountain slopes

Heritage Resource Name

High Field

Catalogue Number

02.03/04.01

Type of Resource

Landscape element



Photograph Date

06/04

Photographer

Penny Pistorius

PhotoTitle

High Field from Vergenoegd sportsfields



Photograph Date

06/04

Photographer

Penny Pistorius

PhotoTitle

High Field from Jonkershoek Road, showing relationship to werf



Photograph Date

06/05

Photographer

Penny Pistorius

PhotoTitle

High field from Lanzerac.

Objects - Description

Visual Description

The top and west side of the hill to the west of the werf is a large field, cultivated but not planted at the time of survey. It is a highly visible landmark at the entrance of the valley.

Condition (short)

Architectural Style

Objects - History

History

The field is not visible as cultivated land on the 1938 aerial photograph, and must have been established subsequently.

Construction Date

Associated People

Associated Events

References

Objects - Assessment

Significance Statement

A highly visible part of the cultural landscape of the farm and the valley.

Significance Category

A

Proposed Grading

3 (as part of farm)

Vulnerabilities

Visually sensitive.

NHR Act Status

Date of Gazette

Official Grading

Recommendations

A = course / pattern of history	F = creative / technical
B = rarity	G = social / cultural / spiritual
C = information potential	H = assoc. NB person / group
D = characteristic of type	I = slavery
E = aesthetic	

Composite - Objects

Property Name

Mount Happy, Jonkershoek, Stellenbosch District

Composite Name

Mount Happy Mountain slopes

Heritage Resource Name

Earthworks

Catalogue Number

02.03/04.02

Type of Resource

Landscape modification



Photograph Date

1980

Photographer

Chief Director: Surveys & Mapping

PhotoTitle

Orthophoto showing earthworks



Photograph Date

06/04

Photographer

Penny Pistorius

PhotoTitle

Earthworks on slopes near east boundary from newly cleared field below

Objects - Description

Visual Description

On the lower slopes near the east boundary is a prominent ditch which cuts across the contour with two downward "arms: from each end. Presumably its purpose is to channel and direct water.

Condition (short)

Architectural Style

Objects - History

History

Not visible on the 1938 aerial photo, it must have been constructed subsequently.

Construction Date

Post-1938

Associated People

Associated Events

References

Objects - Assessment

Significance Statement

This landscape modification appears as a scar on the sparsely-vegetated lower slopes. Its purpose is unknown, but it appears to be a water channelling device.

Significance Category

A, C

Proposed Grading

--

Vulnerabilities

A = course / pattern of history	F = creative / technical
B = rarity	G = social / cultural / spiritual
C = information potential	H = assoc. NB person / group
D = characteristic of type	I = slavery
E = aesthetic	

NHR Act Status

Not older than 60 years (S. 34)

Date of Gazette

Official Grading

Recommendations

Further research necessary.

Composites (groups of clusters of heritage resources: sub-places and areas)

Property Name

Mount Happy, Jonkershoek, Stellenbosch District

Composite Name

Mount Happy water meadows

Catalogue Number

02.03/03

Type of Resource

Landscape composite

Objects

- 1. Old Approach and road
- 2. Barn cluster
- 3. North bank housing



Photograph Date

1980

Photographer

Chief Director: Surveys & Mapping

Photo Title

Water meadows east of the werf (Avenue left), orthophoto.



Photograph Date

1938

Photographer

Chief Director: Surveys & Mapping

Photo Title

Water meadows east of the werf (Avenue left), 1938



Photograph Date

1938

Photographer

Chief Director: Surveys & Mapping

Photo Title

Water meadows west of the werf, 1938



Photograph Date

1980

Photographer

Chief Director: Surveys & Mapping

Photo Title

Water meadows west of the werf, orthophoto.



Photograph Date

06/04

Photographer

Penny Pistorius

Photo Title

Water meadows near east boundary



Photograph Date

06/04

Photographer

Penny Pistorius

Photo Title

Grainlands east of the homestead, looking towards the Avenue



Photograph Date

06/04

Photographer

Penny Pistorius

Photo Title

Vineyards on the western water meadows from the homestead

Composite - Description

Visual Description

The flat, low lying arable lands south of the river are planted with vines to the west of the Avenue and grains in the east.

Condition

Composite - History

History

See Property history. The fertile river fields would have been farmed from the earliest period. In 1938 there were vines on the west fields, orchards and grain/pastures in front of the werf and fallow and cultivated lands in the east, as far as the workers' housing cluster. East of the houses, the land was not cleared. Nearby, the route of the old road can be discerned at the interface of plain and the steeper slope. There may be remains of a waterleiding that irrigated these fields.

Associated People

See Property history.

Associated Events

References

See Property

Composite - Assessment

Significance Statement

Typical of the water meadows of the Jonkershoek valley, these fertile fields would have been farmed from the first land grants. Part of the characteristic rural cultural landscape of Jonkershoek.

Significance Category

A, D, E

Proposed Grading

3

A = course / pattern of history	F = creative / technical
B = rarity	G = social / cultural / spiritual
C = information potential	H = assoc. NB person / group
D = characteristic of type	I = slavery
E = aesthetic	

Vulnerabilities

Recommendations

Official Grading

NHR Act Status

Date of Gazette

Composite - Objects

Property Name

Mount Happy, Jonkershoek, Stellenbosch District

Composite Name

Mount Happy water meadows

Heritage Resource Name

Old Approach and road

Catalogue Number

02.03/03.01

Type of Resource

road



Photograph Date

1938

Photographer

Chief Director: Surveys & Mapping

PhotoTitle

1938 aerial photo with old approach through vineyards clearly visible. Werf is centre right, with avenue. The road entered the werf at the north west corner and crossed it inside the wall.



Photograph Date

06/04

Photographer

Penny Pistorius

PhotoTitle

Gateway on west boundary, south of the river. Gatepost sign: "Bengale 1684"



Photograph Date

06/04

Photographer

Penny Pistorius

PhotoTitle

Roadway along south bank of Eerste River. Werf is visible over vines, at centre.



Photograph Date

06/04

Photographer

Penny Pistorius

PhotoTitle

Old roadway at the base of the slope, east of the werf

Objects - Description

Visual Description

Until recently the approach to Mount Happy was along the south bank of the river, via Vergenoegd and the ford. The road still exists, as does the old gateway with capped pillars and wide metal gates, but it is no longer used as an entrance (see 02.03/02 Entrance). From the gate it follows the river, turning south to bend again and cross in front of the old werf wall. Previously it entered the werf through the gateway in the north west corner. East of the werf there is still a remnant of an old road at the edge of the fields, higher up than the present farm road, and possibly used in winter when the fields are waterlogged.

Condition (short)

Architectural Style

Objects - History

History

This approach is probably as old as the farm (c. 1817) and was in use until the construction of the new entrance (after 1980).

Construction Date

Associated People

See Property

Associated Events

References

See Property

Objects - Assessment

Significance Statement

The old approach to Mount Happy, although no longer used as an entrance, is an important part of its history and cultural landscape, as are remnants of older farm roads east of the werf

Significance Category

A, C, E

Proposed Grading

3B

Vulnerabilities

A = course / pattern of history	F = creative / technical
B = rarity	G = social / cultural / spiritual
C = information potential	H = assoc. NB person / group
D = characteristic of type	I = slavery
E = aesthetic	

NHR Act Status

Gateway is probably older than
60 years (S. 34)

Date of Gazette**Official Grading****Recommendations**

Further research necessary. Should not be obliterated.

Composite - Objects**Property Name**

Mount Happy, Jonkershoek, Stellenbosch District

Composite Name

Mount Happy water meadows

Heritage Resource Name

Barn cluster

Catalogue Number

02.03/03.02

Type of Resource

Group of buildings

**Photograph Date**

06/04

Photographer

Penny Pistorius

PhotoTitle

Mount Happy barn cluster, from the east.

Objects - Description**Visual Description**

On the flat water meadow, just below the rise of the mountain slopes and at an old field boundary marked by a row of old oaks, is a cluster of sheds and barns. This is now the "farmyard", housing agricultural functions which have been removed from the werf.

Condition (short)

Fair

Architectural Style

Modern, utilitarian

Objects - History**History**

Not visible on the 1938 aerial photo, the cluster must have been constructed subsequently.

Construction Date

Post-1938

Associated People**Associated Events****References**

Objects - Assessment

Significance Statement

The removal of farmyard activities from the historical werf to this cluster has significantly changed the "spatial structure" of the farm, and demonstrates a functional separation characteristic of the 20th century. The buildings themselves are of no architectural significance but they are clustered in a characterful way.

Significance Category

A

Proposed Grading

--

A = course / pattern of history	F = creative / technical
B = rarity	G = social / cultural / spiritual
C = information potential	H = assoc. NB person / group
D = characteristic of type	I = slavery
E = aesthetic	

Vulnerabilities

NHR Act Status

Not older than 60 years (S. 34)

Date of Gazette

Official Grading

Recommendations

Composite - Objects

Property Name

Mount Happy, Jonkershoek, Stellenbosch District

Composite Name

Mount Happy water meadows

Heritage Resource Name

North bank housing

Catalogue Number

02.03/03.03

Type of Resource

Group of buildings



Photograph Date

04/05

Photographer

Penny Pistorius

PhotoTitle

North bank workers' houses, Mount Happy



Photograph Date

04/05

Photographer

Penny Pistorius

PhotoTitle

Ford over the Eerste River below the housing.



Photograph Date

04/05

Photographer

Penny Pistorius

PhotoTitle

Mount Happy north bank workers' village area, 1938

Objects - Description

Visual Description

North of the river, between River House and Olien and down a bank from the road, is a small piece of land that is part of Mount Happy. On it is a cluster of typical post-war workers' houses with steel windows and low-pitched asbestos roofs.

The river at this point divides into channels, forming islands. There is a footpath down the steep bank to a shallow ford over the river (photo 2), connecting to a path on the opposite bank.

Condition (short)

Fair

Architectural Style

Utilitarian housing

Objects - History

History

A field is visible on the 1938 aerial photo (photo 3), but there do not appear to be any houses. In 1902 the chief road from Stellenbosch to Jonkershoek and Assegaaibosch, which came along the north bank as far as here, forded the Eerste River and continued on the south bank (see 02.00/02). The location of the crossing has not been identified, but it may have been the one below the houses. A resident we asked had no knowledge of an old road or ford.

Construction Date

Post -1938

Associated People

Associated Events

References

Objects - Assessment

Significance Statement

The present housing cluster post-dates 1938. It is part of a group of workers' housing on both sides of the Jonkershoek road (including the Bergsig and Lingen housing clusters); it is part of the cultural landscape and may have social significance. The course of the old road, which is somewhere nearby, is of interest and merits further study.

Significance Category

A, C, D.

Proposed Grading

--

A = course / pattern of history	F = creative / technical
B = rarity	G = social / cultural / spiritual
C = information potential	H = assoc. NB person / group
D = characteristic of type	I = slavery
E = aesthetic	

Vulnerabilities

NHR Act Status

Not older than 60 years (S. 34)

Date of Gazette

Official Grading

Recommendations

The village, including associated vegetation, paths, etc. should not be removed or fundamentally changed without further research into the history of the dwelling site.

Composites (groups of clusters of heritage resources: sub-places and areas)

Property Name

Mount Happy, Jonkershoek, Stellenbosch District

Composite Name

Mount Happy approach

Catalogue Number

02.03/02

Type of Resource

Landscape composite

Objects

none



Photograph Date

06/04

Photographer

Penny Pistorius

Photo Title

First Bridge



Photograph Date

06/04

Photographer

Penny Pistorius

Photo Title

Second bridge



Photograph Date

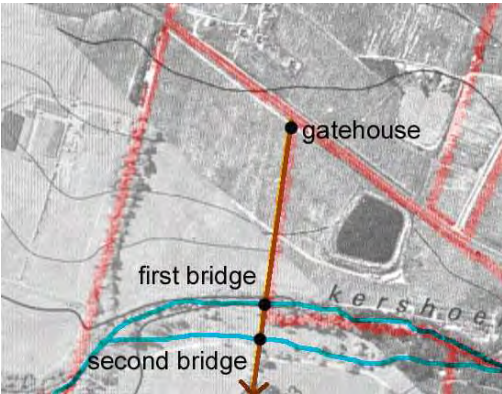
06/04

Photographer

Penny Pistorius

Photo Title

Avenue of plane trees



Photograph Date

1980

Photographer

Chief Director: Surveys & Mapping, Penny Pistorius

Photo Title

Present approach (on 1980 orthophoto).



Photograph Date

06/04

Photographer

Penny Pistorius

Photo Title

Entrance gate

Composite - Description

Visual Description

The present approach is from Jonkershoek road, along the east boundary of the portion of Mount Happy north of the river. There is a modern gatehouse, from which an avenue of recently-planted plane trees runs between fields. The road crosses a steel-framed bridge to the island between two branches of the Eerste River, passes the cemetery, crosses a second, walled bridge, and joins the old avenue to the werf (see 02.03/01.07). As the approach is modern, the various elements are not entered as Objects, but photos are included.

Condition

Composite - History

History

Constructed after the 1981 orthophoto was taken.

Associated People

Associated Events

References

Composite - Assessment

Significance Statement

The modern gatehouse, avenue and bridges and the alignment with the old avenue to the werf are an appropriate modern addition to the cultural landscape of the valley.

Significance Category

A, E

Proposed Grading

--

Vulnerabilities

Recommendations

A = course / pattern of history	F = creative / technical
B = rarity	G = social / cultural / spiritual
C = information potential	H = assoc. NB person / group
D = characteristic of type	I = slavery
E = aesthetic	

Official Grading

17 October 2006

NHR Act Status

Date of Gazette

Page 24 of 41

Composite - Objects

Property Name

Composite Name

Heritage Resource Name

Catalogue Number

Type of Resource

Composites (groups of clusters of heritage resources: sub-places and areas)

Property Name

Mount Happy, Jonkershoek, Stellenbosch District

Composite Name

Mount Happy werf

Catalogue Number

02.03/01

Type of Resource

farmstead

Objects

- 1. house
- 2. barn
- 3. outbuilding 1
- 4. outbuilding 2
- 5. werf wall
- 6. waterworks
- 7. avenue
- 8. cemetery



Photograph Date

05/04

Photographer

Penny Pistorius

Photo Title

Mount Happy werf from Jonkershoek road



Photograph Date

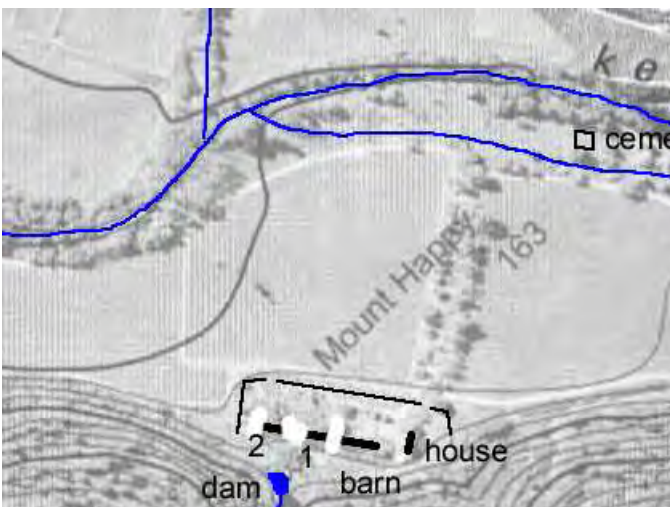
1938

Photographer

Chief Director: Surveys & Mapping

Photo Title

Mount Happy werf, 1938 aerial photo



Photograph Date

1980

Photographer

Chief Director: Surveys & Mapping

Photo Title

Mount Happy Werf, annotated orthophoto

Composite - Description

Visual Description

The werf is sited on the southern edge of the water meadows (see Composite \$), with the steep foothills of Stellenboschberg rising immediately behind it. A stream is captured in a dam above the werf (south) and led around the werf in furrows. The house (Object 1) is at right angles to the slope, facing west. In front of it, set slightly back (south), is a row of three outbuildings (Objects 2, 3, 4) at right angles to the house. The werf is enclosed on the west, north and east by a wall (Object 5) which has two entrances from the old approach road running along its north edge (see Composite) . From the east entrance near the house an avenue of oaks (Object 6) runs across the water meadows to the Eerste River, which divides at this point to form a long 'island' on which, east of the avenue, is a walled cemetery (Object 7).

Condition

Composite - History

History

There was almost certainly not a werf at Mount Happy before the land was regranted as a separate property in 1817 (see Property history). At most there may have been a kraal or shed. Development needs would have included cellars (the wine trade was booming) and other outbuildings, and homes for the owner/supervisor and slaves.

There are some unusual aspects to the way the werf was developed. The main homestead does not have its back to the mountain as almost all Cape houses do, but is at right angles to it: this may have been to make it face the approach along the south bank from Stellenbosch. The avenue to the river was not for access, but was rather to 'point to' the house (as at Kronendal, Hout Bay). A detailed examination of extant building fabric and a study of transfer diagrams may reveal building sequences and developmental phases of the werf.

Most of the outbuildings and the landscaping have been modernised and a building behind the row of outbuildings which is visible on the 1938 aerial has been demolished.

Associated People

See Property

Associated Events

References

See Property

Composite - Assessment

Significance Statement

Although many buildings on it have been modernised, the werf retains many features and geometric relationships typical of a Cape werf, while the siting of the house at right angles to the slope is unusual. It is visible from Jonkershoek road and contributes to the character and cultural landscape of the valley.

Significance Category

A, B, C, E

Proposed Grading

2

A = course / pattern of history	F = creative / technical
B = rarity	G = social / cultural / spiritual
C = information potential	H = assoc. NB person / group
D = characteristic of type	I = slavery
E = aesthetic	

Vulnerabilities

Recommendations

Further detailed historical-archaeological study to establish dating and building sequences at the werf should be undertaken prior to any physical intervention.

Official Grading

NHR Act Status

Date of Gazette

Composite - Objects

Property Name

Mount Happy, Jonkershoek, Stellenbosch District

Composite Name

Mount Happy werf

Heritage Resource Name

Mount Happy house

Catalogue Number

02.03/01.01

Type of Resource

house



Photograph Date

06/04

Photographer

Penny Pistorius

Photo Title

Mount Happy house, front



Photograph Date

06/04

Photographer

Penny Pistorius

PhotoTitle

Mount Happy house



Photograph Date

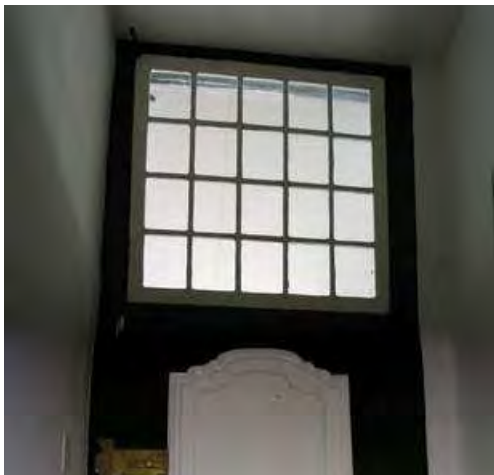
06/04

Photographer

Penny Pistorius

PhotoTitle

Mount Happy house, south wing



Photograph Date

06/04

Photographer

Penny Pistorius

PhotoTitle

Mount Happy house, kitchen door (interior)



Photograph Date

06/04

Photographer

Penny Pistorius

PhotoTitle

Mount Happy house, rear (west)

Objects - Description

Visual Description

A "longhouse" at right angles to the slope, facing east. It has a corrugated iron roof, covered end gables and clipped central gable; the eaves are raised above the earlier thatch line with rectangular ventilators. The gable has a string course and remnant pilasters each side of a shuttered opening. Below is a five-bay façade: central window flanked by 3x3 panel double doors with semicircular radiating fanlights, and with pilasters and hood mouldings. The three 4x6 sashes are large, with low sills. In front is a stoep with a modern quarry tile surface. The south end has an awkwardly adjoining kitchen extension with 3x5 and 3x2 windows on the east and a large hearth with chimney and Dutch period stable door on the south end. At the rear are lean-to extensions with various Georgian and Victorian period sashes. The north end has a modern glazed door with side and fanlights. The avenue lines up with the north end gable.

Condition (short)

Good

Architectural Style

Cape, Georgianised

Objects - History

History

The land had not been farmed independently for 120 years when it was regranted in 1817 and it seems likely that there was a major building episode soon this. The Georgian alterations are c1830. It is not known whether the house's overall form was in place by then, or whether the awkward junction of the kitchen wing, where there is a large hearth, indicates an earlier core. There is a Dutch period door at the rear, presumably moved from elsewhere.

The Georgian features of the homestead (the fanlights, the two sets of double doors, the windows) date from c1830 according to Fransen and Cook. A detailed Deeds Office search is needed to establish who the owner/s were in this period but the author was very likely Izaak de Milander, who was granted further land behind in 1837. The raised eaves and clipped gables date from later in the century when corrugated iron was substituted for the original thatch

Construction Date

Post-1817; elaborated 1830s
and again late 19th century

Associated People

Associated Events

References

Objects - Assessment

Significance Statement

A Georgianised Cape gabled house showing changing building styles, unusually sited at right angles to the slope.

Significance Category

A, B, C, D, E

Proposed Grading

2

Vulnerabilities

A = course / pattern of history	F = creative / technical
B = rarity	G = social / cultural / spiritual
C = information potential	H = assoc. NB person / group
D = characteristic of type	I = slavery
E = aesthetic	

NHR Act Status

older than 60 years (S. 34)

Date of Gazette**Official Grading****Recommendations**

Further research necessary.

Composite - Objects**Property Name**

Mount Happy, Jonkershoek, Stellenbosch District

Composite Name

Mount Happy werf

Heritage Resource Name

Mount Happy barn

Catalogue Number

02.03/01.02

Type of Resource

outbuilding

**Photograph Date**

06/04

Photographer

Penny Pistorius

PhotoTitle

Mount Happy barn

**Photograph Date**

06/04

Photographer

Penny Pistorius

PhotoTitle

Mount Happy barn

Objects - Description

Visual Description

The outbuildings are in a long row at right angles to the house, forming the southern edge to the werf. The barn/cellar is a long rectangular building with corrugated iron roof and 'chimney' gables. It has two arched doorways and various sash windows; all joinery is modern. It serves as a bar and entertainment centre. In front of and below its stoep is a terrace with a swimming pool.

Condition (short)

Good

Architectural Style

Cape, modern.

Objects - History

History

Unknown. It is not visible on the 1938 aerial photo and appears to be modern.

Construction Date

Post-1938.

Associated People

Associated Events

References

Objects - Assessment

Significance Statement

A modern addition to the werf; not inappropriate. Highly visible from Jonkershoek road.

Significance Category

A (as part of werf)

Proposed Grading

--

A = course / pattern of history	F = creative / technical
B = rarity	G = social / cultural / spiritual
C = information potential	H = assoc. NB person / group
D = characteristic of type	I = slavery
E = aesthetic	

Vulnerabilities

NHR Act Status

Not older than 60 years (S. 34)

Date of Gazette

Official Grading

Recommendations

Composite - Objects

Property Name

Mount Happy, Jonkershoek, Stellenbosch District

Composite Name

Mount Happy werf

Heritage Resource Name

Mount Happy outbuilding 1

Catalogue Number

02.03/01.03

Type of Resource

outbuilding



Photograph Date

06/04

Photographer

Penny Pistorius

PhotoTitle

Mount Happy outbuilding 1



Photograph Date

06/04

Photographer

Penny Pistorius

PhotoTitle

Mount Happy outbuilding 1

Objects - Description

Visual Description

Long building with corrugated iron roof and covered end gables, rectangular ventilators to loft. It consists of a row of rooms, each with a door and a shuttered window. Narrow stoep in front, modern extension to the rear.

Condition (short)

Good

Architectural Style

Cape

Objects - History

History

Unknown. Said to have been slave/servants' quarters. Outbuildings (cellars, stores, slave quarters) were essential to a functioning werf and this building may incorporate fabric from soon after 1817. Visible on 1938 aerial photo.

Construction Date

Pre-1938 probably incorporating 19th century fabric.

Associated People

Associated Events

References

Objects - Assessment

Significance Statement

The outbuilding is an intrinsic part of the werf ensemble and merits further study. Said to have been slave quarters.

Significance Category

A, C, D, E, (I?)

Proposed Grading

3 heritage register (s.30)

Vulnerabilities

A = course / pattern of history	F = creative / technical
B = rarity	G = social / cultural / spiritual
C = information potential	H = assoc. NB person / group
D = characteristic of type	I = slavery
E = aesthetic	

NHR Act Status

older than 60 years (S. 34)

Date of Gazette

Official Grading

Recommendations

Further research necessary.

Composite - Objects

Property Name

Mount Happy, Jonkershoek, Stellenbosch District

Composite Name

Mount Happy werf

Heritage Resource Name

Mount Happy outbuilding 2

Catalogue Number

02.03/01.04

Type of Resource

outbuilding



Photograph Date

06/04

Photographer

Penny Pistorius

PhotoTitle

Mount Happy outbuilding 2



Photograph Date

06/04

Photographer

Penny Pistorius

PhotoTitle

Mount Happy outbuilding2

Objects - Description

Visual Description

Long building with corrugated iron roof and covered end gables, rectangular ventilators to loft. It has steel triple-casement windows and towards the eastern end a door (modern) flanked by narrow steel windows. Raised cement stoep in front.

Condition (short)

Good

Architectural Style

Cape, modernised

Objects - History

History

A detailed fabric inspection is necessary to track the history of this building. Outbuildings (cellars, stores, slave quarters) were essential to the 19th century werf but it is not known whether this building was one of them.

Construction Date

Pre-1938

Associated People

Associated Events

References

Objects - Assessment

Significance Statement

The outbuilding is an intrinsic part of the werf ensemble and merits further study.

Significance Category

A, C, D, E

Proposed Grading

3 heritage register (s.30)

Vulnerabilities

A = course / pattern of history	F = creative / technical
B = rarity	G = social / cultural / spiritual
C = information potential	H = assoc. NB person / group
D = characteristic of type	I = slavery
E = aesthetic	

NHR Act Status

older than 60 years (S. 34)

Date of Gazette

Official Grading

Recommendations

Further research necessary.

Composite - Objects

Property Name

Mount Happy, Jonkershoek, Stellenbosch District

Composite Name

Mount Happy werf

Heritage Resource Name

Mount Happy werf wall

Catalogue Number

02.03/01.05

Type of Resource

werf wall



Photograph Date

06/04

Photographer

Penny Pistorius

PhotoTitle

Mount Happy werf wall



Photograph Date

06/04

Photographer

Penny Pistorius

PhotoTitle

Mount Happy werf wall from the east

Objects - Description

Visual Description

The werf is backed by Stellenboschberg in the south and the remaining three sides are enclosed in a plastered wall with a foundation of rounded river stones. It has pillars at regular intervals with rounded square caps and the wall itself has a rounded capping. There are two gateways in the north wall: one in the east and one in the west opposite the side of the house. The side walls step down the slope; the front wall is on a bank above the road that runs in front of it.

Condition (short)

Good

Architectural Style

Cape

Objects - History

History

Unknown, but the enclosure of the farmstead by walls is a defining feature of Cape werfs over a long period. Probably made soon after 1817 when the werf was established. Much repaired over the years.

Construction Date

Associated People

Associated Events

References

Objects - Assessment

Significance Statement

A very significant and authentic component of the historical werf; typical of Cape farmsteads; a good example of its type; prominent component of the werf as viewed from Jonkershoek road.

Significance Category

A, D, E

Proposed Grading

2

A = course / pattern of history	F = creative / technical
B = rarity	G = social / cultural / spiritual
C = information potential	H = assoc. NB person / group
D = characteristic of type	I = slavery
E = aesthetic	

Vulnerabilities

NHR Act Status

older than 60 years (S. 34)

Date of Gazette

Official Grading

Recommendations

Retain and repair as required; should not be over-restored.

Composite - Objects

Property Name

Mount Happy, Jonkershoek, Stellenbosch District

Composite Name

Mount Happy werf

Heritage Resource Name

Waterworks

Catalogue Number

02.03/01.06

Type of Resource

waterworks



Photograph Date

06/04

Photographer

Penny Pistorius

PhotoTitle

Dam, Mount Happy werf



Photograph Date

06/04

Photographer

Penny Pistorius

PhotoTitle

Water furrow in front of outbuilding 1, Mount Happy werf

Objects - Description

Visual Description

A stream is captured in a dam on the slope behind the werf . Around the werf are various water furrows which may be historical.

Condition (short)

Fair

Architectural Style

Objects - History

History

Unknown. Water furrows were used from the earliest time of settlement to distribute water to the werf and irrigate the lands. A ready supply of water was the key factor in locating a werf.

Construction Date

Unknown

Associated People

Associated Events

References

Objects - Assessment

Significance Statement

The water distribution system at the werf may yield information on this little-studied and very significant component of settlement patterns.

Significance Category

A, C

Proposed Grading

3

A = course / pattern of history	F = creative / technical
B = rarity	G = social / cultural / spiritual
C = information potential	H = assoc. NB person / group
D = characteristic of type	I = slavery
E = aesthetic	

Vulnerabilities

NHR Act Status

Probably older than 60 years (S. 34)

Date of Gazette

Official Grading

Recommendations

Further research necessary.

Composite - Objects

Property Name

Mount Happy, Jonkershoek, Stellenbosch District

Composite Name

Mount Happy werf

Heritage Resource Name

Avenue

Catalogue Number

02.03/01.07

Type of Resource

avenue



Photograph Date

06/04

Photographer

Penny Pistorius

PhotoTitle

Mount Happy avenue from the small bridge



Photograph Date

06/04

Photographer

Penny Pistorius

PhotoTitle

Mount Happy avenue, approaching werf

Objects - Description

Visual Description

An avenue of mature oaks (and young ones where there were gaps) runs between the fields down to the river, in line with the end gable of the house. The east gateway in the werf wall is slightly offset from this axis. It is now used as the approach to the werf from Jonkershoek

Condition (short)

Good

Architectural Style

Objects - History

History

Avenues were a common device in the formalisation and elaboration of farm werfs during prosperous periods in the nineteenth century. This one was historically not the approach to the werf, which was along the south bank of the river, but was rather a landscape device to extend the space of the werf into the landscape and draw attention to it.

Construction Date

Associated People

Associated Events

References

Objects - Assessment

Significance Statement

The fine old avenue is a very significant component of the composition of the werf and contributes to the cultural landscape of the farm and the valley as a whole.

Significance Category

A, D, E

Proposed Grading

2

A = course / pattern of history	F = creative / technical
B = rarity	G = social / cultural / spiritual
C = information potential	H = assoc. NB person / group
D = characteristic of type	I = slavery
E = aesthetic	

Vulnerabilities

NHR Act Status

Date of Gazette

Official Grading

Recommendations

Composite - Objects

Property Name

Mount Happy, Jonkershoek, Stellenbosch District

Composite Name

Mount Happy werf

Heritage Resource Name

Cemetery

Catalogue Number

02.03/01.08

Type of Resource

cemetery



Photograph Date

06/04

Photographer

Penny Pistorius

PhotoTitle

Mount Happy cemetery



Photograph Date

06/04

Photographer

Penny Pistorius

PhotoTitle

Mount Happy cemetery

Objects - Description

Visual Description

Good but overgrown

Condition (short)

Good but overgrown

Architectural Style

Objects - History

History

Unknown.

Construction Date**Associated People****Associated Events****References*****Objects - Assessment*****Significance Statement**

The graveyard is a culturally significant component of the farmstead and its walled enclosure, set in a grove of trees on an island in the Eerste River, is of unusual and attractive design and workmanship.

Significance Category

A, B, C, E, F, G

Proposed Grading

2/3

A = course / pattern of history	F = creative / technical
B = rarity	G = social / cultural / spiritual
C = information potential	H = assoc. NB person / group
D = characteristic of type	I = slavery
E = aesthetic	

Vulnerabilities**NHR Act Status**

Older than 60 years (S. 34),
burial ground (S. 36)

Date of Gazette**Official Grading****Recommendations**

Further research necessary.