

# Heritage Survey: Stellenbosch Rural Areas

by Penny Pistorius and Stewart Harris - June 2004

## Sub Area Name

Jonkershoek

## Catalogue Number

02.23

## Property Name

Glen Conner (Municipal), Jonkershoek, Stellenbosch District

## Alternative Names

## Farm Number

351/1

## Linkages

Old Nectar Historical property

## Heritage Resource Name

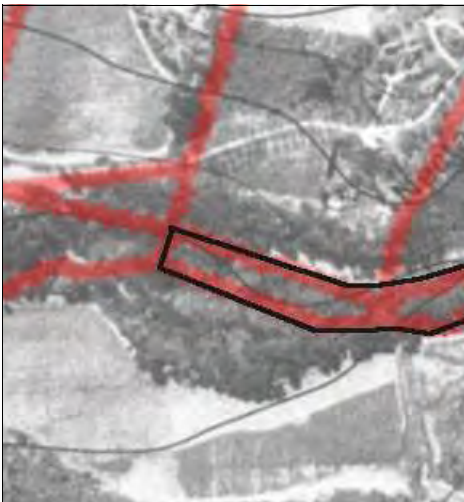
Glen Conner (Municipal)

## Type of Resource

land

## Composites

none



## Photo Date

1980

## Photographer

Chief Director: Surveys & Mapping

## Photo Title

Orthophoto with added cadastrals



## Photo Date

CAM2-409

## Photographer

## Photo Title

1902 map: Red blocks 17th century grants, yellow lines early 19th c, pink dots roads. Grey/black rivers.

## Description

### Visual Description

Important spatial moment on the Jonkershoek road as the bult of Old Nectar ridge presses forward virtually to the Eerste River,

### Notes

IM 335sqrd  
Owner (2000) Stellenbosch Municipality

before Old Nectar is revealed. This is a narrow strip of land below the road (its north edge) and Eerste Rivier (south). A cliff-like, steep bank about 6 metres high retains the road, then there is a strip of flat flood plain along the river with mature exotic woodland. At the west is the Municipality waterworks 02.25. There are possibly off-takes to them (not inspected).

**History**

A virtually useless piece of farmland, acquired by Charles Marais in 1841 (see Old Nectar historical property). The steepness of the cliff clearly demonstrates why the main road to Jonkershoek was on the south side of the river. The 1902 map shows that the old road this side led only to Old Nectar, and ran much higher up the bank (see 02.16). The present road was made in the 20th century; this land may have been acquired for that purpose. For waterworks history c1925 see discussion 02.25.

**Historical Notes**

Deeds Office search not attempted.

**Associated People**

Not attempted

**Associated Events**

see discussion 02.25

**References**

- 1902 Brink Map CA M2-409 shows location of grants
- 1938 aerial photograph.
- 1980s orthophoto
- 2000 aerial photograph.
- Site inspection 04/05

**Assessment**

**Significance Statement**

Part of the river bank cultural landscape.

**Significance Category**

E

A = course / pattern of history	F = creative / technical
B = rarity	G = social / cultural / spiritual
C = information potential	H = assoc. NB person / group
D = characteristic of type	I = slavery
E = aesthetic	

**Proposed Grading**

3 heritage area (S.31)

**Vulnerabilities**

**Recommendations**

<b>NHR Act Status</b>	<b>Date of Gazette</b>	<b>SAHRA File ref.</b>	<b>Official Grading</b>
-----------------------	------------------------	------------------------	-------------------------

**Maps**

<b>Number of Ortho Photo</b>	<b>GPS X</b>
------------------------------	--------------

<b>Date of Ortho Photo</b>	<b>GPS Y</b>
----------------------------	--------------

<b>Aerial Photograph Date</b>	<b>GPS Model</b>
-------------------------------	------------------

*Aerial Photo Number*

*GPS Setting*

*Composites (groups of clusters of heritage resources: sub-places and areas)*

*Property Name*

*Composite Name*

*Catalogue Number*

*Type of Resource*

*Objects*