

Heritage Survey: Stellenbosch Rural Areas

by Penny Pistorius and Stewart Harris - June 2004

Sub Area Name

Jonkershoek

Catalogue Number

02.40

Property Name

Upper Lanzerac Farm, Jonkershoek, Stellenbosch District

Alternative Names

Forellen Cottage (aka De Forellen) and Klein Switzerland (upper Klein Gustrouw)

Farm Number

1321 (or 327/6), 334/27 (or 334/21)

Linkages

Lanzerac historical property, Klein Gustrouw historical property

Heritage Resource Name

Upper Lanzerac Farm

Type of Resource

farm

Composites

1. De Forellen
2. Klein Switzerland



Photo Date

06/05

Photographer

Penny Pistorius

Photo Title

Upper Lanzerac dominates the middle distance view from Jonkershoek Road.



Photo Date

1998

Photographer

Gerald Hoberman

Photo Title

The farm is the slope R of the central cone-shaped hill, from the foot of the Jonkershoekbergkloof, L, up the base of the wooded ridge, a piece of mountainside behind the two hills middle horizon, and the steep wooded valley below.



Photo Date **Photographer**
2000 Chief Director: Surveys & Mapping

Photo Title
Upper Lanzerac, 2000 aerial photo



Photo Date **Photographer**
1950s Studio Lockley

Photo Title
1950 Lockley photograph. Field on western De Forellen is only development.

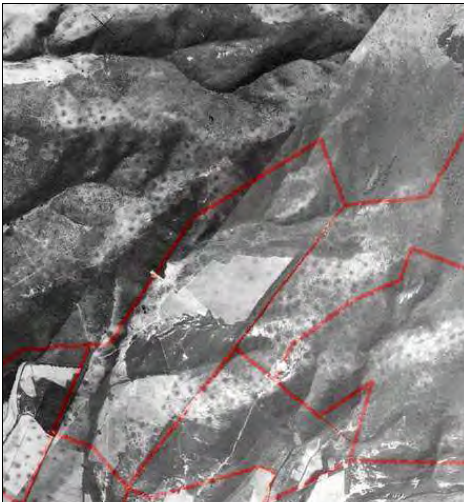


Photo Date **Photographer**
1988 Chief Director: Surveys & Mapping

Photo Title
1938 aerial photo with added (current) cadastrals, showing large field between Jonkershoekbergkloof and its southern tributary.

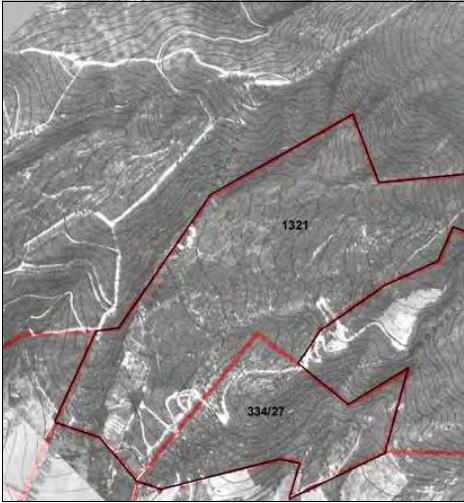


Photo Date 1980
Photographer Chief Director: Surveys & Mapping

Photo Title
 Upper Lanzerac, 1980 orthophoto with added cadastrals

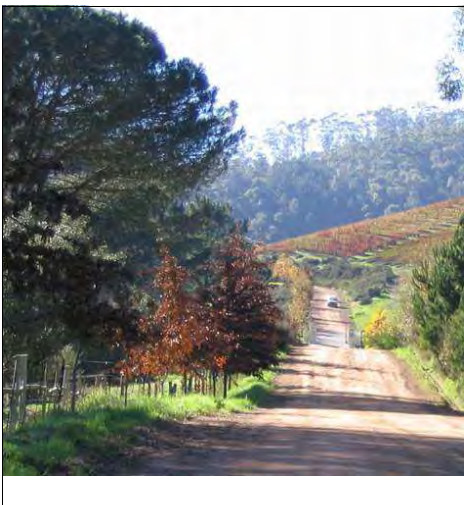


Photo Date 06/05
Photographer Penny Pistorius

Photo Title
 The entrance road to Upper Lanzerac Farm runs between Klein Lanzerac and Klein Gustrouw. The gate is in the dip below the vehicle.



Photo Date CAM2-409
Photographer

Photo Title
 1902 map with approximate overlay of current cadastrals in red: Red and brown blocks 17th C grants, yellow lines early 19th C, pink dots roads. Grey/black rivers.

Description

Visual Description

A large, irregularly-shaped estate, consisting of two portions with a variety of morphological areas and spanning two historical properties, Lanzerac and Klein Gustrouw (photos 1-3). The estate

Notes

The 1999 SDF and the Stellenbosch District erf map have conflicting information. According to information acquired during this survey, the erf map

is now owned and farmed together with the vineyards at Lanzerac (02.37) and is called (on the sign) "Lanzerac Boerdery" with De Forellen and Klein Switzerland as sub-headings. We call it Upper Lanzerac to clearly distinguish it from Lanzerac Hotel. The entrance to the property is on a road between Klein Lanzerac and Klein Gustrouw (photo 4), and access to Bo Gustrouw (02.33) is across the property.

The two portions are described in Composite 1 (De Forellen) and Composite 2 (Klein Switzerland).

is correct.

* 1321 is listed in the SDF as Forellen Cottage, farm no. 327/6, at 48.8963 ha. However, it is drawn smaller than farm 1321, with the south eastern boundary continued straight up to join the crook in the Bothmaskop boundary (the old boundary between Lanzerac and Klein Gustrouw); the upper eastern portion of farm 1321 is put together with farm 334/1 as Bo Gustrouw (50.85 ha).

* 334/27 (on the Stellenbosch District erf map) is listed in the SDF as 334/21, Klein Gustrouw, at 22 ha.

The owner/main shareholder of both portions (with the boundary shown on photo 1) is CH Wiese, owner of Lanzerac Hotel (Lanzerac Farm Manager, pers.comm).

History

These two portions have been owned since the early 1990s by Christo Wiese, owner of Lanzerac. Since then dams have been built, extensive vineyards developed, the road layout altered, and workers' housing, managers' houses and workshops have built (Lanzerac Farm Manager, pers. comm.). The farm consists of complex subdivisions and consolidations of fragments of numerous properties (Deeds Office search not attempted).

The western portion of De Forellen includes part of the original 1680s Lanzerac grant along the Jonkershoekbergkloof stream -- uncertainly located by Brink, the author of the 1902 map -- and Fick's 1817 extension of it. (See more in Lanzerac Historical Property). The history of this part of Isaak Schryver's lands is submerged in the general development of Lanzerac so little is known. If the valley was part of his original grant, he would have altered the watercourses to irrigate the fields further down and traces of this landscape modification may still exist. The eastern portion is the steepest parts of four or five early 19th century Klein Gustrouw grants (photo 5). In 1938 there was a field on the west facing slope between the streams and some agricultural activity visible in the south western part above Klein Lanzerac (photo 7). The field is also visible on a 1950 photograph (photo 8), but by 1980 the land had apparently fallen largely into disuse (see orthophoto, photo 1)

Klein Switzerland was formerly upper Klein Gustrouw -- the eastern portion part of an 1817 grant and the western portion part of an 1836 expansion. See Klein Gustrouw historical property. The present north and south boundaries (date not known) have triangular extensions to capture more of the Pontakkloof stream. In 1938 the property was evidently still part of Klein Gustrouw and there were orchards and possibly vineyards in the valley

Historical Notes

Deeds Office search not attempted.

Associated People

see Lanzerac Historical Property and Klein Gustrouw Historical Property

Associated Events

References

1902 Brink Map CA M2-409 shows location of grants
1938 aerial photograph.
1980s orthophoto
2000 aerial photograph.
1950 Lockley photograph
1998 Hoberman photograph
Lanzerac Farm Manager, pers comm..
Site inspections, 06/05

Assessment

Significance Statement

A prominent property at the entrance to the valley, it dominates the middle distance view from Jonkershoek Road past Lanzerac. Comprising portions of historical Lanzerac and Klein Gustrouw, it is historically significant. Information potential from further study, particularly of watercourses. Significant part of the cultural landscape, visually sensitive

Significance Category

A, C, E

A = course / pattern of history	F = creative / technical
B = rarity	G = social / cultural / spiritual
C = information potential	H = assoc. NB person / group
D = characteristic of type	I = slavery
E = aesthetic	

Proposed Grading

3 heritage area (s.31)

Vulnerabilities

Visually sensitive, particularly upper parts.

Recommendations

NHR Act Status ***Date of Gazette*** ***SAHRA File ref.*** ***Official Grading***

Maps

Number of Ortho Photo ***GPS X***

Date of Ortho Photo ***GPS Y***

Aerial Photograph Date ***GPS Model***

Aerial Photo Number ***GPS Setting***

Composites (groups of clusters of heritage resources: sub-places and areas)

Property Name

Upper Lanzerac Farm, Jonkershoek, Stellenbosch District

Composite Name

Klein Switzerland, Upper Lanzerac Farm

Catalogue Number

02.40/02

Type of Resource

landscape composite

Objects

none



Photograph Date

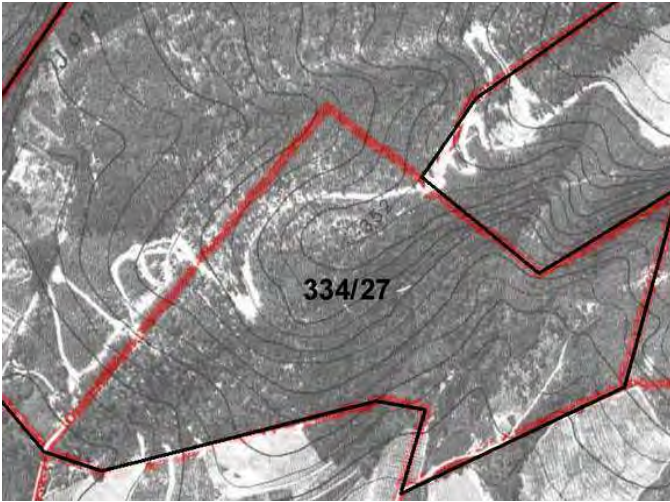
1938

Photographer

Chief Director: Surveys & Mapping

Photo Title

Klein Switzerland, 1938 aerial photo



Photograph Date

1980

Photographer

Chief Director: Surveys & Mapping

Photo Title

Klein Switzerland, 1980 orthophoto



Photograph Date

06/05

Photographer

Penny Pistorius

Photo Title

House, Klein Switzerland



Photograph Date

2000

Photographer

Chief Director: Surveys & Mapping

Photo Title

Klein Switzerland, 2000 aerial photo

Composite - Description

Visual Description

The north western part of this property is a rounded hill (352m) above the cone-shaped hill of Klein Gustrouw (02.34). The south west portion takes in a tributary to the Jonkershoekbergkloof stream that runs down that side of the hill. There is a housing village in the lower part of the tributary valley (see photo 8 in Composite 1) in the south west corner of the property. The road to Bo Gustrouw loops eastward above the valley and then around the hill. The eastern part of the property is a folded, steep-sided valley above Klein Gustrouw/Leef op Hoop werf, formed by Pontakkloof stream and a tributary. There is a contemporary house in the valley between the streams (photo 3), reached by a steep and winding road, and a dam in the south east corner. Arable slopes are vineyards, farmed

with those of De Forellen; steep slopes are bush.

Condition

Composite - History

History

See Property.

Associated People

Associated Events

References

See Property.

Composite - Assessment

Significance Statement

Previously part of Klein Gustrouw, this secluded, steep-sided valley of the Pontakkloof is a very distinctive morphological area and contributes to the variety of the cultural landscape.

Significance Category

A, E

A = course / pattern of history	F = creative / technical
B = rarity	G = social / cultural / spiritual
C = information potential	H = assoc. NB person / group
D = characteristic of type	I = slavery
E = aesthetic	

Proposed Grading

3 heritage area (s. 31)

Vulnerabilities

Recommendations

Official Grading

NHR Act Status

Date of Gazette

No buildings older than 60 years (s. 34)

Composite - Objects

Property Name

Composite Name

Heritage Resource Name

Catalogue Number

Type of Resource

Composites (groups of clusters of heritage resources: sub-places and areas)

Property Name

Upper Lanzerac Farm, Jonkershoek, Stellenbosch District

Composite Name

De Forellen, Upper Lanzerac Farm

Catalogue Number

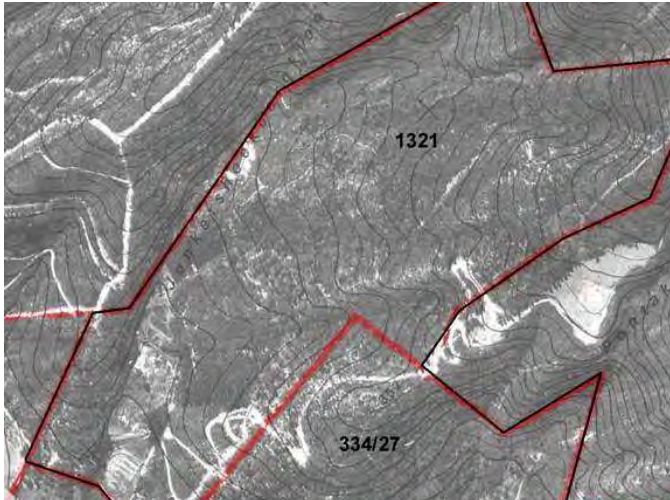
02.40/01

Type of Resource

landscape composite

Objects

none



Photograph Date

1980

Photographer

Chief Director: Surveys & Mapping

Photo Title

De Forellen, 1980 orthophoto



Photograph Date

06/05

Photographer

Penny Pistorius

Photo Title

Third in a panorama of De Forellen from the hill, SE. Modern house and workshop, L, vineyards on the hill R, dam on tributary foreground. West slopes of Jonkershoekbergkloof behind.



Photograph Date

06/05

Photographer

Penny Pistorius

Photo Title

Contemporary house and shed, De Forellen.



Photograph Date

06/05

Photographer

Penny Pistorius

Photo Title

Contemporary workers' villages on Klein Switzerland (L) and De Forellen (R)



Photograph Date

06/05

Photographer

Penny Pistorius

Photo Title

Fourth in a panorama of De Forellen from the hill, SE. Dam on tributary, L, and tributary kloof foreground. Dam on Jonkershoekbergkloof is behind vineyards, R of centre.



Photograph Date

06/05

Photographer

Penny Pistorius

Photo Title

Second in a panorama of De Forellen from the hill, SE. L is dam at confluence of streams. Modern house and workshop above (R) of it. On top of the ridge behind them is a vineyard. Foreground vineyards.



Photograph Date

06/05

Photographer

Penny Pistorius

Photo Title

First in a panorama of De Forellen from the hill, SE. Foreground is vineyards south of tributary. L of centre is Klein Gustrouw vineyards, then two housing villages each side of the entrance road, Klein Lanzerac behind.



Photograph Date

06/05

Photographer

Penny Pistorius

Photo Title

Fifth in a panorama of De Forellen from the hill, SE. Tributary kloof foreground, with vineyards both sides and up to Bo Gustrouw (the two hills at the head of the slope, right). Property includes mountainside behind Bo Gustrouw.



Photograph Date

2000

Photographer

Chief Director: Surveys & Mapping

Photo Title

De Forellen, 2000 aerial photo

Composite - Description

Visual Description

Farm 1321 (De Forellen/Forellen Cottage) is predominantly a west-facing slope south and east of upper Jonkershoekbergkloof. It is enclosed north and west by the steep, bush covered sides of the kloof. The slope is planted with vineyards, and there is a tributary running down the middle of it in a secondary kloof (photos 2-5). At the confluence of the streams is a large dam, and there are smaller dams higher up on both streams.

The only buildings on the property are in the south western part. Each side of the entrance, north of Klein Lanzerac and Klein Gustrouw respectively, are workers villages constructed since 1980 (the east one is on Klein Switzerland, Composite 2) (photo 8). Above the dam at the confluence of streams is a timber house and a complex of sheds, also post-1980 (photo 9).

Condition

Composite - History

History

See Property.

Associated People

Associated Events

References

See Property.

Composite - Assessment

Significance Statement

Contemporary development of this previously neglected property into vineyards as part of Lanzerac historical wine estate (of which the western portion was previously part), is appropriate, as are the siting of contemporary villages in folds in the landscape. It is an important and highly visible part of the cultural landscape at the entrance of the valley. The intense agricultural redevelopment of the 1990s is likely to have destroyed any traces of previous water channels in the vineyards, but there may be traces remaining in the kloofs

Significance Category

A, C, E

Proposed Grading

3 heritage area (s. 31)

Vulnerabilities

A = course / pattern of history	F = creative / technical
B = rarity	G = social / cultural / spiritual
C = information potential	H = assoc. NB person / group
D = characteristic of type	I = slavery
E = aesthetic	

Recommendations

Official Grading

NHR Act Status

Date of Gazette

No buildings older than 60 years (s. 34)

Composite - Objects

Property Name

Composite Name

Heritage Resource Name

Catalogue Number

Type of Resource